

March, 2008
Volume 10, Issue 7

Evening Star Gazette

Evening Star Quilt Guild
Birmingham, Alabama

Inside this issue:

From the Prez	2
Sunshine Corner	3
Treasurer's Report	12
Library News	6

Next Meeting: March 6, 2008

March Program

Trapunto

Join us in welcoming back our speaker, JoAn Knight. JoAn met with us in December to talk about GSQA.

In March, JoAn will give us a little history on trapunto. Trapunto quilting (Italian for "*to embroider*"), also called stuffed technique, is a quilting technique that is quite decorative in that it utilizes at least two layers, which is padded from the underside. This produces a raised surface on the quilt.

JoAn will talk to us about how trapunto used to be done and show us examples of hand quilted and machine quilted trapunto.

FEBRUARY REFRESHMENTS

Salty: Di Wash, Beverly Williamson, Darlene Calfee

Sweet: Cynthia Brown, Linda Duke

Snacks: Ella Thomas, C Pettit

Veggies: Di Wash

Fruit: Karen Relfe

Drinks: DaCostas, Anne Stansell, Terry Bell, Cheryl Clabough

Paper Products:

Ice:

STARTING TIME

Mingle with members at 6:30, meeting starts promptly at 7PM.. Visitors are always welcome.

LOOKING AHEAD

March 6	Guild Meeting Fat Quarter Exchange - Cats/Dogs
March 18	Board meeting (Tuesday)
April 4-5	Peggy Barkle Workshop
April 23-36	2008 National Paducah, Kentucky Quilt Show
June 12-14	Alabama Quilt Symposium – Classes and Show
June 25 – 29	Red Rooster Retreat
July 16 – 20	Red Rooster Retreat

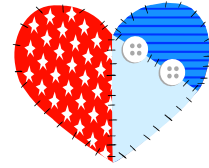


Meeting Location: North Shelby County Library
5521 Cahaba Valley Rd - (Highway 119)
Birmingham, AL 35242-4901
(205) 439-5500

March Library Volunteers

Alma Gaertner
Pam Boarders

From the Prez



Stitches from My Heart to You

Spring is almost here. Are your quilts ready to display in the next quilt show? Last year was the first show I have entered and it was quite an experience. Although I did not expect to win a ribbon, it was exciting to see my quilts hanging amongst the quilts of our other quilting sisters quilts.

It is interesting to view the different methods, fabrics, and styles each year. Yes, styles in quilts change with the times. When I appliquéd my first Iris quilt in 1965, I would have never thought of machine quilting. Also, the fabric Mother and I used in this quilt was not the same as we purchase today. I remember Mother and her sisters exchanging bits of fabric for the iris blocks and working to match the colors. They never thought of a color wheel. They used common sense by looking at nature all around us.

The color wheel is just one of our “modern toys” that sometimes we feel we just can’t work without. How times have changed. Methods of marking our quilts have changed drastically. I think it was in the early 70s when I first saw anyone using the blue water erasable pen. I remember being startled in seeing the blue markings totally ruining the quilt, and I didn’t believe for a minute that water would erase the color from the quilt. Again, times have changed, not only in methods and tools. I have changed greatly in my thinking and in the use of the available tools we have to choose from.

So, at your next quilt show, I urge you to view all the quilts with an open mind. Who knows? You may want to step out of the box and try your hand at a new method. Then proudly show your quilt in the next show!

Until next time, keep your machines running!

Helen

Sunshine Corner
Happy Birthday to:



Lura Campbell on the 9th
Joan Smith on the 19th
Jessica Griggs on the 26th

Next Board Meeting



March 18 , 2008 - Tuesday

Time: 5:30PM

Location: St. Peter's Catholic Church

Room 202

2061 Patton Chapel Road,

Hoover

All members are encouraged to attend the board meetings and learn how your guild is run. If you have an item that you would like to add to the agenda, contact Helen Tankersley by the morning of the meeting.

Submit Ideas and suggestions to the
Guild Director . . .

Mary Guthrie

Phone: 991-6979

Cell: 529-2877

FAX: 991-2945

Email" Maryguthrie@aol.com

Reminder: Please wear your name tag to the meetings so you can register for the name tag drawing when you sign in. Our numbers are growing and we want to meet each other!



Red Rooster Retreat

It is time to sign up for quilting retreat fun at the Red Rooster Retreat located in Crane Hill, Alabama on beautiful Smith Lake. The facility features a large work area, view of Smith Lake, a pool, and hot tub. Meals and snacks are provided.

Red Rooster Retreat 2008 Dates are:

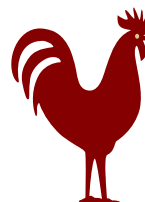
- Wednesday, June 25th through Sunday, June 29th
- Wednesday July 16th through Sunday July 20th

Glenda Waguespack will have sign up sheets available at the March guild meeting.

Wednesday thru Sunday.....	\$205 (includes 12 meals)
Thursday thru Sunday.....	\$175 (includes 9 meals)
Friday thru Sunday.....	\$145 (includes 6 meals)

Mark your calendars and bring your checkbooks to put down your deposit of \$50 to secure a spot.

If you would like more information about this retreat location please go to www.RedRoosterRetreat.com



Library News

The ESQG library has 178 books/DVD's with a replacement value of \$3,348!! Thanks to contributions made by our members, our library continues to grow. There are books for all skill levels, from beginners to advanced. Improve your techniques by checking out a book or two today.

Susan



Embroidery Bits

The embroidery Bee continues to meet on the first Saturday of the month from 9 – 12 at the Helena United Methodist Church. This past Saturday, we did an appliqué heart.

Due to the Peggy Barkle workshop, the Embroidery Bee for April will move to April 12th. Please note the change.

In April, we will do a lace bookmark. Embroidery Library, www.emblibrary.com, has a large collection of bookmarks that can be purchased. Until Tuesday, they are also having a great 10th anniversary sale. Their top ten designs from the past 10 years are on sale for \$1.10 each. On top of that, you can

download the two free designs they currently have and purchase a special design for 17 cents. If you don't want to purchase a design, there are a lot of free sites such as Ann The Gran's site, www.annthegran.com, where there is a large selection of free designs. Download your design, pack up your machine and stabilizer and join us.

May's project will be quilt labels. The May meeting will be May 3rd. For questions or information, contact Lura Campbell, 663-2822.

An Evening with Peggy Barkle

You are invited to join Peggy and other members of the guild Saturday night for a meal and some socializing. We will have a guild provided meal at Lura Campbell's home. The meat and side items will be provided. If you would like to contribute a desert or drink, please contact Lura. We will gather at 6 p.m. at 1507 Citation Terrace, Helena. (663-2822)



AQS Book Order

The next book order will be placed after the March meeting.

This is a good time to order books from AQS for a 30% savings with our group order. This includes 30% savings on

software such as EQ6. Books can be viewed at

www.AmericanQuilter.com or look at the AQS catalog at the ESQG library table.

Fat Quarter Exchange!!

Build up your stash the easy way! Bring fat quarters for chances to win a stash. It just may be your lucky day!

Bring a fat quarter (18" X 22") each month and your name is entered to win a group of these fabrics. Each month is a different color or pattern. Please bring a good 100% cotton fabric.

Following month. Refer to it as your friendly reminder –



Fat Quarter Drawing

March- Cats/Dogs

April- Blacks/Grays

May- Flowers

June- Plaids

July- Bugs/Critters

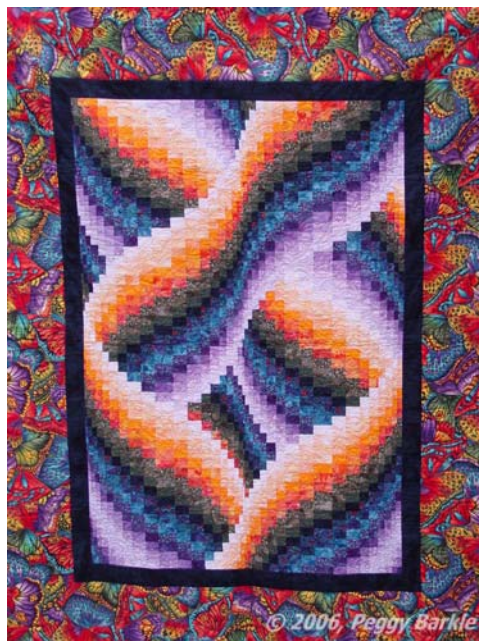
August- Cream/Tans

Peggy Barkle's Twisted Bargello Workshop
Saturday, April 5th

It is almost full. We can allow only a couple more in this class before we begin a wait list. Please see Lura Campbell if you have not registered and want to join this workshop. If your name is on the list, we need your payment to keep your slot. Anyone who has not paid by the March meeting will lose their spot to someone on the wait list. The Twisted Bargello workshop will be held on April 5th at the Episcopal Church on Hwy. 119 west of Caldwell Mill Rd..

If you are taking the Bargello class, you may want to begin selecting your fabrics. Need some ideas for color combinations? Check out this web site: <http://www.amishcountrylanes.com/>. There are some great looking bargello quilts shown here. Another place to get ideas is to search Webshots: <http://www.webshots.com/>.

The instructions for the pre-class sewing were e-mailed Sunday. If you did not get the instructions, please contact Lura.



Peggy Barkle's Blendable Curves Workshop
Friday, April 4th

Here is your last chance. Don't miss out on adding a curve to your quilting. This is a workshop on a technique, based on Peggy's new book, *Blendable Curves*. Even though this looks difficult, this is a beginner class. You don't even have to worry about an exact quarter inch seam. We still have some openings in the Friday, April 4th class, which will be at the North Shelby library. You may choose any $\frac{1}{2}$ square pattern from the book to make during class. Books will be available at the March meeting. Be sure to get yours as there will not be any class hand outs. If you really just want to learn the technique, grab a multi-color fabric, some fat-quarters that go along and a bit of background fabric. You will come away from this workshop with a one of a kind quilt.



From Our Historian –

As our Historian this year, I am collecting pictures, brochures, newspaper articles and any other information to "capture" our fun times for many memories to come. I cannot always be at all the functions so I will be asking you to share any pictures or brochures or pamphlets you might have. I am currently looking for any pictures or information you might have from the Ricky Tims trip to Knoxville. Also, I know several ladies entered quilts in the Shelby Fair a couple of months ago and won some ribbons. If you have this information, please see me at the meetings or contact me. I would greatly appreciate it and it would help preserve our activities this year.

Much thanks, Carol Harmon



EVENING STAR QUILT GUILD- FEBRUARY 7, 2008

CALL TO ORDER--The meeting was called to order at 7PM by Helen Tankersley, president, who wished the membership a happy Chinese new year with this being the year of the rat.

PRESIDENT'S COMMENTS-- Helen handed out directions to the first block in a mystery quilt class puzzle which will take six months to complete. The finished size will be 45 1/2" X 59 1/2". A table filled with items free for the taking was located in the rear of the room. Glenda Waguespack will have the Red Rooster retreat sign-up sheet available at the March meeting. Connie Pettit requested help identifying the pattern of a quilt inherited by her friend. Ginny Stevens offered to check her book of quilt patterns. Members were requested to sign next month's library and refreshment sign-up sheets that were being passed around.

APPROVAL OF MINUTES AND TREASURER'S REPORT--Following a motion by Frances Burch and a second by Connie Pettit, the minutes were approved as written in the newsletter. On the treasurer's report the library donations should be clarified to read as "North Shelby Library". With this clarification, the treasurer's report was approved as written in the newsletter following a motion by *Selena DaCosta* and a second by *Meaghan DaCosta (these young ladies are shining stars in our guild!!)*.

SUNSHINE REPORT--Brenda AlburI recognized the following birthdays: Tamara Heinemann (Feb. 4), Jeanne Heinemann (Feb.6), Susan Rigby (Feb. 9), Brenda AlburI (Feb. 14), Anne Stansell (Feb. 17).

MEMBERSHIP--Di Wash won the name tag drawing. Bell Woods announced that 44 members were present with two (2) visitors in attendance, Jane Powell and Sarah Mays. One visitor, Sarah Mays, joined. Members who have not received their membership cards are requested to see Bell Woods. Terry Bell asked when members would receive guild membership lists. Bell sent the lists to Ella but Ella was unaware that the lists needed to be sent to the membership. Bell and Ella will take care of this.

NATIONAL SPEAKER--Lura Campbell announced final details for Peggy Barkle's class which will be held at St. Francis of Assisi Episcopal Church on Saturday, April 4, 2008. The church is located at 3545 Cahaba Valley Road, Indian Springs Village. Seats are still available in both Friday and Saturday classes. Any half square project in Peggy's book may be used for Friday's "Blendable Curves" class. Fabric requirements for Friday's class will vary depending upon project chosen; all fabric requirements are listed in her book. Members who wish to purchase Peggy's book may purchase it from Lura; make checks payable to Peggy Barkle. Books can be signed by Peggy, the guest speaker for the month of April.

JANUARY RETREAT 2008--For those members who would like copies of pictures taken at the Shocco Springs retreat, Carol Harmon will make a CD. Bring cash or check to the next meeting but e-mail Carol in advance so that she will know how many CDs to bring to the meeting.

NEWSLETTER--The deadline for articles to the newsletter is February 22.

PROJECT LINUS--Frances Burch stated that the first Project Linus quilt for the year was turned in at this meeting leaving the guild extremely far behind its total for last year. Last year's chairperson, Cynthia Brown, reminded the membership that it made 257 quilts last year. Lura Campbell informed the guild that Janome sponsored Project Linus last year by giving away a sewing machine. This year Janome is not giving away a machine but the Smocking Bird will sponsor the event by giving away a machine. The sponsor's drawing is in April. Frances Burch will try to set up a workshop at the Smocking Bird. Frances Burch will be in California next

month so Cynthia will handle the project in her absence. Ginny Stevens agreed to teach the technique on birthing (a/k/a pillow casing) quilt. Quilts to be donated to Project Linus must meet a minimum size of 200" in circumference and be at least 36" X 36" with no embellishments. See the Project Linus site for more details.

FAT QUARTER DRAWING--The winners of this month's fat quarter drawing were Ann Stansell, Judy Goodwin, and Frances Burch.

SHOW AND TELL--Darlene Calfee brought a Gordian Knot quilt and a Stars quilt. Susan Rigby brought a Simple Quilt made from one yard lengths, perfect for making Project Linus quilts. Susan also brought a miniature quilt from Fons and Porter's December 2007 issue and a Gordian Knot IV quilt. Carolyn Horton brought a rag quilt and a rag bag tote. Carolyn Ray used Sally Schneider's technique to make a Quilt of Valor. Carolyn also showed a quilted Tropical Wall Hanging and a Nickel quilt made with 5" pieces. Judy Goodwin brought two pieces of Chicken Scratch, a block made by her mother-in-law and one made by Judy. Mary Guthrie brought the Chicken Scratch block from her class at retreat and her Bulldogs Quilt Blocks. Jeanne Heinemann brought two rag quilts, Mariah Brundidge brought a Gordian Knot Trains quilt, Brenda Alburl brought a War Eagle quilt, Patty Huys showed a deer quilt which was her first attempt at free motion quilting and an embroidery machine appliqué quilt she made for her grandson. Cynthia Brown showed a Woven Ribbon quilt made for her mother-in-law's 65th birthday. She also brought a quilt she made for a four year old girl named Emily whose father was killed in a car accident. Emily and her family have recently moved to England; having now finished the quilt, Cynthia brought it to show before sending it to the child. Sara Adlman brought a green quilted jacket she made as well as her now completed Woven Stars quilt started in Sally Scheider's class. Karen Rolf brought a Fons and Porter challenge quilt and a St. Jude's Quilt of Dreams quilt. Cheryl Clabough brought her daughter's wedding quilt that she made. (At members' request Cheryl asked that the following be noted: The scrappy quilt she brought for January's show and tell was from *Quick Quilts* magazine's October 2006 issue. She used the star pattern but used 1/8" seams instead of 1/4" seams. The stars are pieced then machine blanket stitched. Twelve stars took one hour.) Cheryl decided to keep the scrappy quilt and not donate it as originally planned. Mary Fickes made quilts out of panels with curvy "frames". Lura Campbell brought a Gordian Knot III, a Wanderlust quilt, and blocks from her sister to be made into a quilt for her niece who is getting married. New member, Sarah Mays, brought a table runner and a quilt made of 20 embroidered blocks. Each block was made by a different woman then assembled into a quilt top by Sarah who had it long arm quilted by Lura Campbell. Pam Borders brought a quilt made by a free design she found at Heart to Heart Quilt Shop; Lura will put the design in the newsletter. Ginny Stevens brought her Chicken Scratch block and a wall hanging made with a ruler for curves. Jessica Griggs brought a quilt and pillowcases made for the children who prayed for her recovery while she was in a coma. Mandy Edwards brought a hand quilted Roman Candle quilt.

PROGRAM--Glenda Waguespack introduced our speaker, Carol Logan Newbill, owner of Pisces Moon Studio. She is a full time web designer and artist working in fiber. Carol has a degree in geology with minors in psychology and computer information technology. Carol has been a geologist, hydrologist, and environmental engineer; she has also served as visiting instructor for the Taos Institute of Arts and as a book editor for Oxmoor House.

Carol gave an overview of techniques that she uses in her quilts. Except for the paint sticks, none of the embellishments shown this evening are washable; they must be dry-cleaned. 1-One technique was the use of mylar which can be purchased as holiday wrapping paper or recycled from helium filled balloons. To apply the mylar to fabric, place mylar between fabric and parchment paper then iron until it wrinkles. (When placing the mylar on fabric, place the side not to be seen closest to the iron.) After ironing, the mylar will be flexible enough for stitching

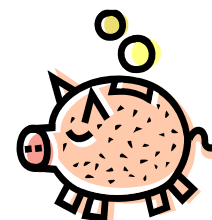
with a topstitching needle. Silk, metallic or even cotton thread may be used but no nylon thread. 2-When using paint sticks, prewash fabric to be painted. Heat set painted fabric with parchment paper between iron and painted fabric after one week of curing (allowing the paint to dry). Do not dry-clean; paint resists fading when washed. Paint sticks have a strong odor, use in a well ventilated area. 3- Angelina is a product that resembles very fine grass used in Easter baskets. Carol brought a quilt where she used it for angel wings; it can also be used for fairies, dragonflies, and other such wings. The product can be purchased from embellishmentvillage.com and is heat bondable. Iron the angelina between sheets of parchment paper but use care not to let the angelina get too hot as it will lose its shine. The product will turn from loose fibers into flat sheets at which point it can be cut into desired shapes. Apply the angelina to fabric with Wonder Under or by stitching. 4-Gold leaf is purchased in sheet form then cut to desired shape and applied to fabric with Wonder Under. Use a sea sponge such as used for bathing, and while dry, wipe across the gold leaf to distress it to make it look old. This technique can be used for halos. 5- Carol also uses spray dyed cheese cloth to add dimension to her quilts. Supplies may be purchased from such companies as zanzibartrading.com, dharmatrading.com and woodprintblocks.com, the last of which is a subsidiary of Zanzibar Trading Company. Carol brought door prizes; the winners of these gifts were Sharon Tate and Jessica Griggs.

ADJOURNMENT-- The meeting was adjourned at 8:50PM.

Respectfully submitted,

Jeanne Heinemann, Secretary

Treasurer's Report 03/03/2008



Beginning Balance.....	\$ 8,196.50
Income.....	
Membership.....	23.00
Book Order.....	34.54
Shelby Library Donations.....	26.43
	84.43
Expenses.....	
February Speaker.....	50.00
Book Order.....	42.91
Jan. Retreat (prizes).....	206.01
	298.92
Ending Balance.....	\$7982.01

Sara Adlman, Treasurer

Shrimp & Feta Pasta Salad

Serves: 15

1 lb orzo

Cook orzo according to package instructions. Drain, & rinse several times in cold water.

3 lbs medium shrimp, cooked & peeled
1 red bell pepper, coarsely chopped
1 6 oz. can ripe olives, halved
(1 15 oz. Can pineapple tidbits, drained)
1/2 cup chopped fresh dill
1/2 cup of chopped onion

Put all ingredients at left in a large bowl.
Add orzo. Recipe can be made 1 day in advance.
Just before serving, pour over the dressing and gently toss.

Feta Cheese Dressing

3/4 cup lemon juice (4 lemons)
3/4-cup olive oil
1 TBS sugar
1 large garlic clove, smashed
1 lb Feta, crumbled
Black pepper to taste

Put all ingredients at left into a large jar.
Shake well.
Can be made several days in advance.

To Serve:

Boston lettuce leaves
Fresh dill
Thin slices of lemon

Put salad into natural "cups" of lettuce leaves.
Garnish with dill and lemon slices

Notes:

Use more or less of all ingredients to taste.
I chop the onion and red pepper in the food processor
I DON'T recommend the pineapple, but it is part of the original recipe
Make sure to season well before serving
Keeps for a couple of days – great for outdoor parties, because there is nothing to "go bad"
Watch out for that garlic clove!

 *Susan Barrow*